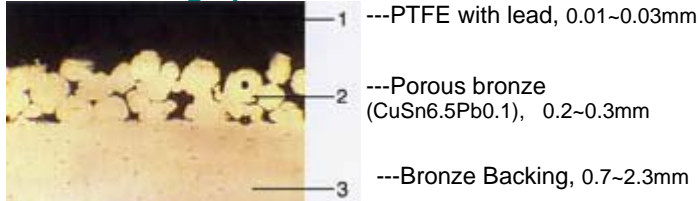


SF-1B Self Lubricating Bushing is of high safety factory, and is particularly appropriate for high temperature environment where no oil is efficient and where the machine must be under successive long period working condition. It is widely used in steel metallurgy industry such as bushed for roller grooves of successive casting machines, cement grouting pumps and screw conveyers for cement. It can also be composed in steel housing or fabricated into flanged bushed which can move both in radial and in axial directions. It can be applied in bridge bearing plate because of thicker inner surface layer to arrive 130N/mm²

Color Metallograph



Bronze Backing Technical Data

Code	Chemical Composition%				
	Sn	Pb	P	Other	Cu
CuSn6.5P0.1	6.0~7.0	1.5~3.5	0.15~0.25	<=0.1	Balance

Physical Properties

Load Capacity	Temperature Limit	PV Limit (dry)	PV Limit (oil)	Friction Coef	Speed Limit
140N/mm ²	-195°C~300°C	4.3N/mm ²	50N/mm ²	0.03~0.18	5m/s

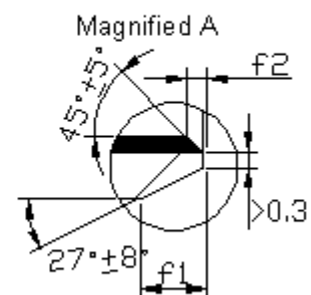
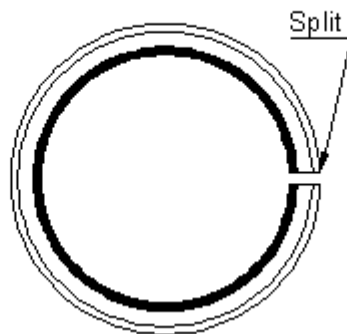
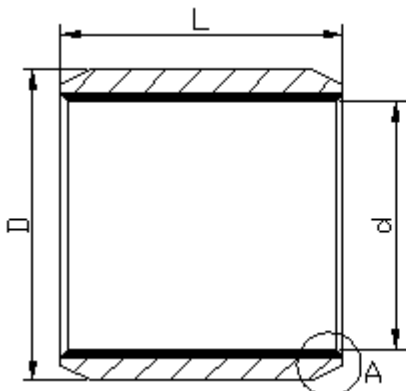
Application Case

1. PTFE and lead can protect the shaft while the machine in operation.
2. Bronze have good thermal conductivity, it'll divert heat while the machine operating.
3. It can be applied in the machine, working long time, which examine and repair is incapable, because the bronze can lubricate itself.
4. It is used in the feeble acid and alkali condition because of good anti-corrosion of bronze backing.
5. Good load capacity
6. It is widely used in steel metallurgy industry, such as bushed for filler grooves of successive casting machines, cement grouting pumps and screw conveyers of machine etc.
7. It can be composed in steel housing , or fabricated into flange bushes which result in function for motion both on flange and I.D.



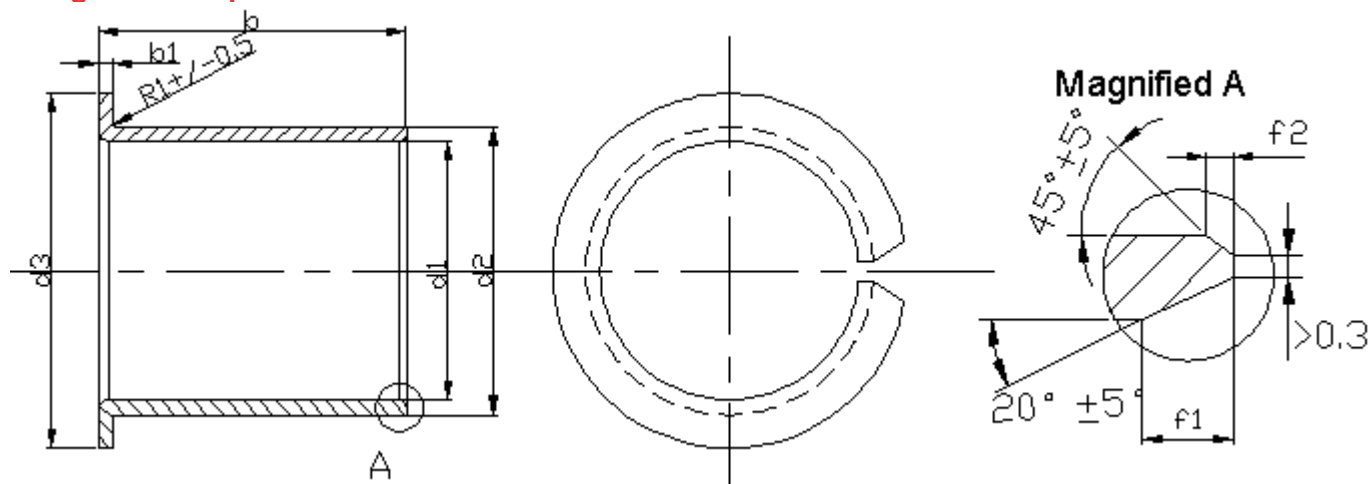
Size Specification

Cylinder Series Specification



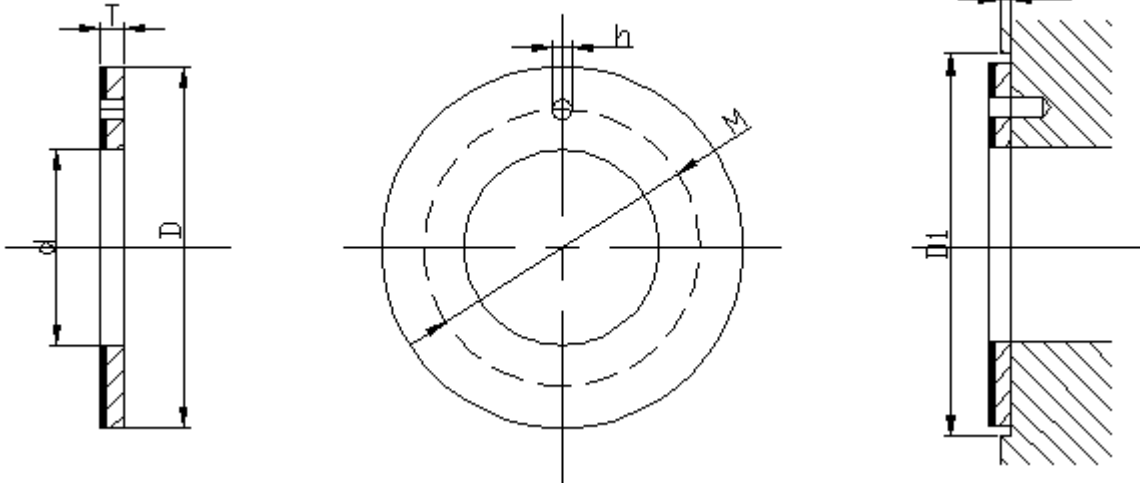
d	D	L	Housing Bore H7	Wall Thickness		f1	f2	L													
				Min	Max			6	8	10	12	15	20	25	30	40	50				
6	8	6	8	0.980	1.005	0.5	0.3	0606	0608	0610											
8	10	8	10					0806	0808	0810	0812	0815									
10	12	10	12					1006	1008	1010	1012	1015	1020								
12	14	12	14					1206	1208	1210	1212	1215	1220	1225							
13	15	13	15										1320								
14	16	14	16									1410	1412	1415	1420	1425					
15	17	15	17									1510	1512	1515	1520	1525					
16	18	16	18									1610	1612	1615	1620	1625					
17	19	17	19									1710	1712		1720						
18	20	18	20									1810	1812	1815	1820	1825					
20	23	20	23	1.475	1.505	0.8	0.4			2010	2012	2015	2020	2025	2030						
22	25	22	25							2210	2212	2215	2220	2225	2230						
24	27	24	27									2415	2420	2425	2430						
25	28	25	28							2510	2512	2515	2520	2525	2530	2540	2550				
28	32	28	32	1.970	2.005	1.0	0.5					2815	2820	2825	2830	2840					
30	34	30	34									3012	3015	3020	3025	3030	3040				
32	36	32	36											3220		3230	3240				
35	39	35	39										3512	3515	3520	3525	3530	3540	3550		
38	42	38	42										3815				3830	3840			
40	44	40	44										4012		4020	4025	4030	4040	4050		
d	D	L	Housing Bore H7	Wall Thickness		f1	f2	L													
				Min	Max			20	25	30	40	50	60	70	80	100					
45	50	45	50	2.460	2.505	1.2	0.6	4520	4525	4530	4540	4550									
50	55	50	55					5020		5030	5040	5050	5060								
55	60	55	60							5530	5540	5550	5560								
60	65	60	65							6030	6040	6050	6060	6070							
65	70	65	70							6530	6540	6550	6560	6570							
70	75	70	75								7040	7050	7060	7070	7080						
75	80	75	80							7530	7540	7550	7560	7570	7580						
80	85	80	85	2.440	2.490	1.4	0.7				8040	8050	8060	8070	8080	80100					
85	90	85	90								8540		8560		8580	85100					
90	95	90	95								9040	9050	9060		9080	90100					
95	100	95	100									9550	9560		9580	95100					
100	105	100	105										10050	10060		10080					
105	110	105	110											10560		10580					
110	115	110	115							11060		11080									
120	125	120	125	2.415	2.465	1.6	0.8					12060		12080	120100						
125	130	125	130											12560			125100				
130	135	130	135											13060		13080	130100				
140	145	140	145											14060		14080	140100				
150	155	150	155										15050	15060		15080	150100				
160	165	160	165											16060		16080	160100				
180	185	180	185													18080	180100				
190	195	190	195													19080	190100				
200	205	200	205											20060		20080	200100				
220	225	220	225													22080	220100				
250	255	250	255													25080	250100				
260	265	260	265													26080	260100				
280	285	280	285													28080	280100				
300	305	300	305									30080	300100								

Flange Series Specification



Shaft Dia.	Housing (H7)	Size						
		d1	d2	d3+0.5	b+0.25	b1-0.2	f1	f2
-0.013 6 ^{-0.028}	8	6	8	12	4	1	0.5	0.4
					7			
-0.013 8 ^{-0.028}	10	8	10	15	5.5	1	0.5	0.4
					7.5			
-0.016 10 ^{-0.034}	12	10	12	18	7	1	0.5	0.4
					9			
					12			
-0.016 12 ^{-0.034}	14	12	14	20	7	1	0.5	0.4
					9			
					12			
-0.016 14 ^{-0.034}	16	14	16	22	12	1	0.5	0.4
					17			
-0.016 15 ^{-0.034}	17	15	17	23	9	1	0.5	0.4
					12			
					17			
-0.016 16 ^{-0.034}	18	16	18	24	12	1	0.5	0.4
					17			
-0.016 18 ^{-0.034}	20	18	20	26	12	1	0.5	0.4
					17			
					20			
-0.020 20 ^{-0.041}	23	20	23	30	11.5	1.5	0.8	0.4
					16.5			
					21.5			
-0.020 22 ^{-0.041}	25	22	25	32	15	1.5	0.8	0.4
					20			
					11.5			
-0.020 25 ^{-0.041}	28	25	28	35	16.5	1.5	0.8	0.4
					21.5			
					16			
-0.025 30 ^{-0.050}	34	30	34	42	26	2	1.0	0.5
					16			
-0.025 35 ^{-0.050}	39	35	39	47	26	2	1.0	0.5
					26			
-0.025 40 ^{-0.050}	44	40	44	53	26	2	1.0	0.5
					40			

Washer Series Specification



Shaft Dia.	Size of Washer				Size For Installation		
	$d_{+0.25}$	$D_{-0.25}$	$T_{-0.05}$	$M_{\pm 0.12}$	$H_{+0.4/-0.1}$	$T_{\pm 0.2}$	$D_{+0.12}$
8	10	20	1.5	15	1.5	1	20
10	12	24	1.5	18	1.5	1	24
12	14	26	1.5	20	2	1	26
14	16	30	1.5	23	2	1	30
16	18	32	1.5	25	2	1	32
18	20	36	1.5	28	3	1	36
20	22	38	1.5	30	3	1	38
22	24	42	1.5	33	3	1	42
24	26	44	1.5	35	3	1	44
25	28	48	1.5	38	4	1	48
30	32	54	1.5	43	4	1	54
35	38	62	1.5	60	4	1	62
40	42	66	1.5	54	4	1	66
45	48	74	1.5	61	4	1.5	74
50	52	78	2	65	4	1.5	78
60	62	90	2	76	4	1.5	90